



# DURAClone SC

SEIZE THE POTENTIAL



Powered By

**DURA Innovations**

Dry Unitized Reagent Assays

**VISUALIZE**  
*the possibilities.*

For Research Use Only - Not for use in diagnostic procedures

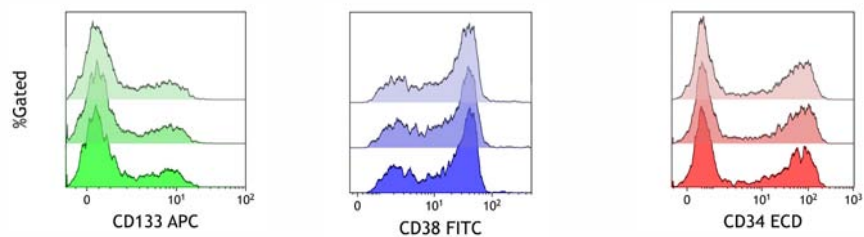


**BECKMAN  
COULTER**

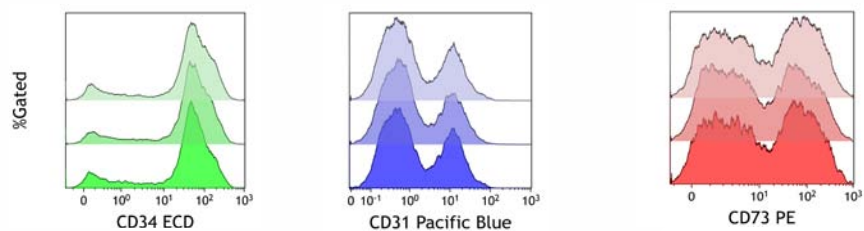
**Life Sciences**

# SEIZE THE POTENTIAL

The DURAClone SC antibody panels enable rigorous stem cell characterization in complex biological source materials as well as in enriched cellular products.



Co-expression profiles on CD45dimSSC<sub>low</sub> cells from 3-fold repeated staining of a human bone marrow sample using DURAClone SC Hematopoietic (Navios cytometer).



Co-expression profiles on CD45<sup>neg</sup> cells from 3-fold repeated staining of a stromal vascular fraction sample using DURAClone SC Mesenchymal (Navios cytometer, data courtesy of D. Polancec and L. Zenic, Children's Hospital Srebrnjak/Croatia).

Each DURAClone SC tube contains a pre-formulated dry 8 color antibody panel that will dissolve upon addition of the sample. Room temperature stability and ISO 9001: 2015-compliant manufacturing allow for a rigorous staining procedure with repeatable results.

The DURAClone SC antibody panels have been developed and tested for the characterization of human adult stem cells.

- Pre-formulated 8 color antibody panels
- Unitized dry Beckman Coulter proprietary format
- Expert-proven marker combinations
- 25 tests/package
- Including a dye lot-matched compensation solution

Product	405 nm		488 nm					633 nm			Quality Standard
	PB	KrO	FITC	PE	ECD	PC5.5	PC7	APC	APC AF700	APC AF750	
SC Mesenchymal C34369 (25 tests RUO)	CD31	CD14/CD19	CD90	CD73	CD34	CD146	CD105	-	-	CD45	ISO 9001: 2015
SC Hematopoietic C49589 (25 tests RUO)	CD90	CD45	CD38	CD49f	CD34	-	CD10	CD133	-	CD45RA	

Usage of identical tandem dye-labeled antibodies in the compensation kits and the assay tubes ensures accurate and easy compensation.



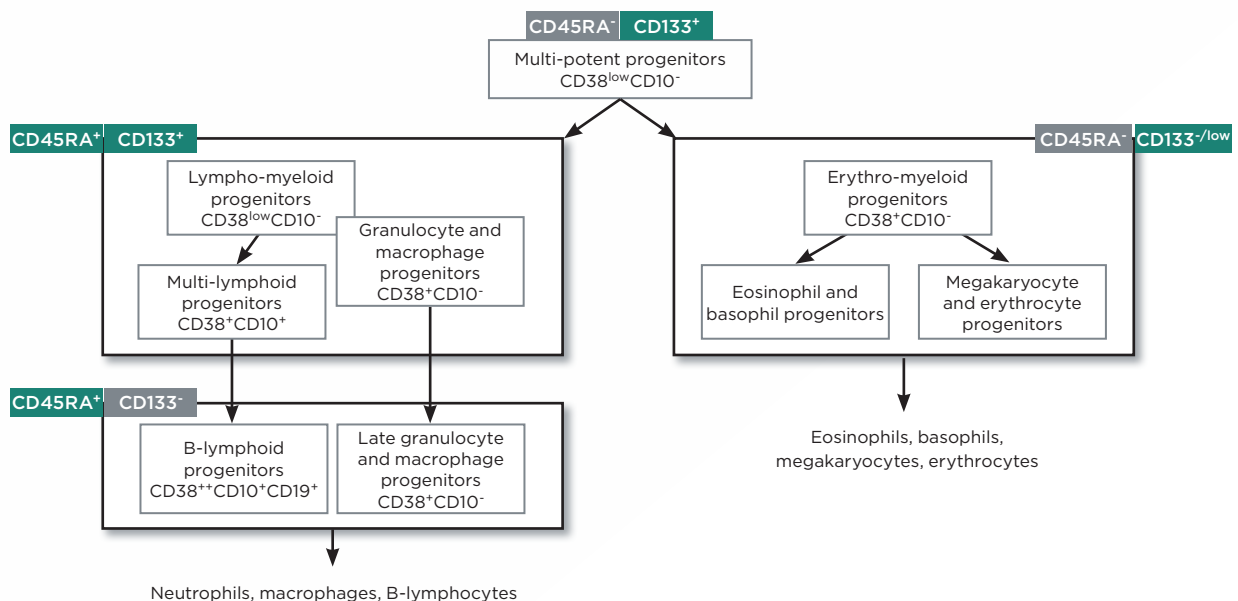
# RELY ON RIGOR THROUGHOUT

Capture cellular characteristics and composition from complex source materials to enriched cell products, standardized and concordant with published criteria<sup>1</sup>, using DURAClone SC Mesenchymal antibody panel.

Mesenchymal expression in e.g. Stromal Vascular Fraction	Marker	Mesenchymal expression in cell culture product
-	CD14/CD19	-
-	CD45	-
-/+	CD105	++
++	CD73	++
++	CD90	++
++ * (various stem cells ++)	CD34	-
- (endothelial progenitors ++)	CD31	- (endothelial cells ++)
-/+ (Pericytes ++)	CD146	-/+

\* may vary with source material

Investigate commitment and potential of hematopoietic stem and progenitor cells from various source materials, standardized and consistent with canonical models of hematopoiesis<sup>2</sup>, using DURAClone SC Hematopoietic antibody panel.



<sup>1</sup> Dominici et al., Cytotherapy 2006

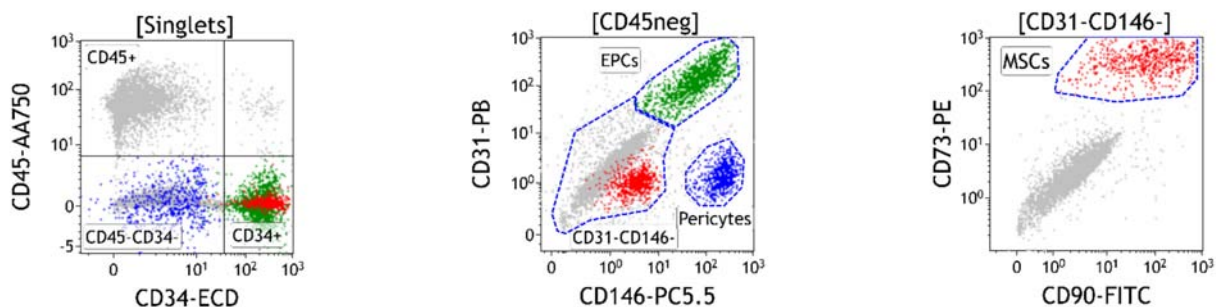
<sup>2</sup> Görgens et al., Cell Cycle 2013; Dmytrus et al. Bone Marrow Transplantation 2016



# DURAClone SC DATA EXAMPLES

	405 nm		488 nm					633 nm			
SC Mesenchymal	PB	KrO	FITC	PE	ECD	PC5.5	PC7	APC	APC-AF700	APC-AF750	Quality Standard
C34369 (25 tests RUO)	CD31	CD14/ CD19	CD90	CD73	CD34	CD146	CD105	-	-	CD45	ISO 9001: 2015

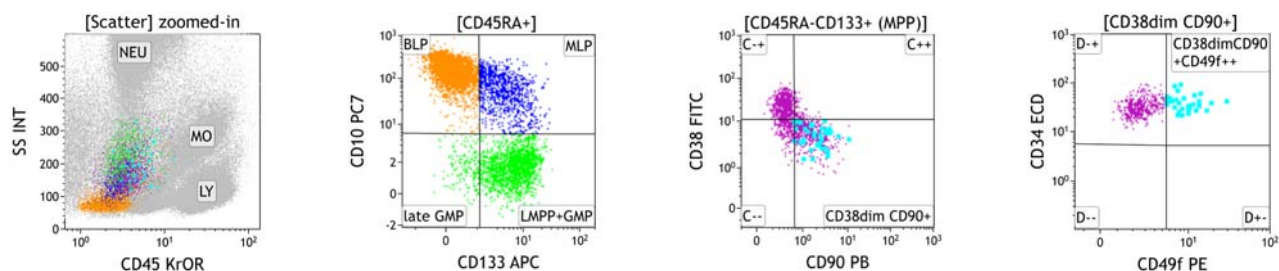
## Stromal Vascular Fraction



Data was acquired on a Navios cytometer, kindly provided by Florence Sabatier and Laurent Arnaud, Hopital de la Conception, Marseille

	405 nm		488 nm					633 nm			
SC Hematopoietic	PB	KrO	FITC	PE	ECD	PC5.5	PC7	APC	APC-AF700	APC-AF750	Quality Standard
C49589 (25 tests RUO)	CD90	CD45	CD38	CD49f	CD34	-	CD10	CD133	-	CD45RA	ISO 9001: 2015

## Normal Bone Marrow



Results from staining of a sample from bone marrow using DURAClone SC Hematopoietic (Navios cytometer).

# FLEXIBLE ADAPTATION TO YOUR RESEARCH

The DURAClone SC antibody panels accommodate additional antibodies and DNA dyes in liquid format as well as fixable viability dyes to adapt to specific experimental questions and biological materials. The following suggestions refer to Navios/Navios EX 10 color configurations but are not limited to these.\*

	405 nm		488 nm					633 nm				
Product	PB	KrO	FITC	PE	ECD	PC5.5	PC7	APC	AF647	APC AF700	APC AF750	Quality Standard
SC Mesenchymal C34369 (25 tests RU0)	CD31	CD14/CD19	CD90	CD73	CD34	CD146	CD105	-	-	-	CD45	ISO 9001: 2015

Drop-in

Drop-in

Fixable viability dye  
ViaKrome 638 (C36624)

Viability dye DRAQ7 (B25595)  
Nuclear staining dye DRAQ5

APC/AF647-labeled antibodies  
e.g. HLA-DR-APC (IM3635)

APC-AF700/AF700-labeled antibodies  
e.g. CD71-APC-AF700 (A97051)

Compatibility of drop-in reagents  
must be verified by the user

	405 nm		488 nm					633 nm				
Product	PB	KrO	FITC	PE	ECD	PC5.5	PC7	APC	AF647	APC AF700	APC AF750	Quality Standard
SC Hematopoietic C49589 (25 tests RU0)	CD90	CD45	CD38	CD49f	CD34	-	CD10	CD133	-	-	CD45RA	ISO 9001: 2015

Drop-in

Drop-in

Viability dye 7-AAD (B88526)

Viability dye DRAQ7 (B25595)  
Nuclear staining dye DRAQ5

PC5.5/PerCPcy5.5-labeled antibodies  
e.g. CD117-PC5.5 (A66333/B96754)


APC-AF700/AF700-labeled antibodies  
e.g. CD71-APC-AF700 (A97051)

Compatibility of drop-in reagents  
must be verified by the user

\* Compatibility of the DURAClone SC kits must be verified by the user for each reagent added. Performance characteristics may vary depending on the type of instrument.

# MORE DURAClone TOOLS FOR CLINICAL RESEARCH

## DURAClone IM for Immune System Research

	Product	405 nm		488 nm					633 nm					Quality Standard
		PB	KrO	FITC	PE	ECD	PC5.5	PC7	APC	AF647	AF700	APC-A700	APC-A750	
 Designed by expert labs from	IM Phenotyping Basic Tube B53309 (25 tests RUO)	-	CD45	CD16	CD56	CD19	-	CD14	CD4	-	CD8	-	CD3	ISO 9001: 2015
	IM B Cell Tube B53318 (25 tests RUO)	IgM	CD45	IgD	CD21	CD19	-	CD27	CD24	-	-	-	CD38	
	IM T Cell Subsets Tube B53328 (25 tests RUO)	CD57	CD45	CD45RA	CCR7	CD28	PD1	CD27	CD4	-	CD8	-	CD3	
	IM Dendritic Cells Tube B53351 (25 tests RUO)	HLA-DR	CD45	CD16	Lineage**	-	CD1c	CD11c	Clec9A	-	-	CD123	-	
	IM TCRs Tube B53340 (25 tests RUO)	TCRVδ2	CD45	TCRγδ	TCRαβ	HLA-DR	-	TCRVδ1	CD4	-	CD8	-	CD3	
	IM Treg Tube B53346 (25 tests RUO)	Helios	CD45	CD45RA	CD25	-	CD39	CD4	-	FoxP3	-	-	CD3	
	IM Granulocytes Tube B88651 (25 tests RUO)	CD15	CD45	CD294	-	CD16	CD33	CD11b	PD-L1	-	-	Lineage***	CD62L	
	IM Count Tube C00162 (25 tests RUO)	-	-	CD45	Counting Beads		7-AAD	-	-	-	-	-	-	

\*\* CD3 / CD19 / CD20 / CD14 / CD56

\*\*\* CD3 / CD14 / CD19 / CD56

## DURAClone IF for Immune Functional Assays

Product	405 nm		488 nm					633 nm				Quality Standard
	PB	KrO	FITC	PE	ECD	PC5.5	PC7	APC	AF647	AF700	AF750	
IF T Activation * B88649 (25 tests RUO)	CD4	-	IFNγ	TNFα	-	-	IL-2	-		CD8	CD3	ISO 9001: 2015
IF T Helper Cell * C04666 (25 tests RUO)	IL-17A	-	IFNγ	-	-	-	IL-4	CD4		-	CD3	
IF Monocytes Activation * C21858 (25 tests RUO)	CD14	CD45	-	HLA-DR	-	-	-	-		TNFα	-	
IF Basophil Activation C23406 (25 tests RUO)	CD63	CD45	-	CD203c	-	-	CD3	-	CD294 (CRTH2)	-	-	

\* Please see also dry DURActive stimulation mixes at [www.beckman.com](http://www.beckman.com)

PB: Pacific Blue\*  
KrO: Krome Orange

AF647: Alexa Fluor\* 647  
AF700: Alexa Fluor\* 700  
AF750: Alexa Fluor\* 750

APC-A700: APC-Alexa Fluor\* 700  
APC-A750: APC-Alexa Fluor\* 750

Advancing Science Through Discovery

For Research Use Only. Not for use in diagnostic procedures.



## Choose Beckman Coulter for Benchmark Expertise and Innovation

For over 80 years Beckman Coulter has driven innovation. We remain committed to shaping flow cytometry technology to fit seamlessly into your lab's workflow and to provide an optimal user experience. When you choose a Beckman Coulter solution you receive a high level of expertise, innovation, and quality assurance.



Contact your local Beckman Coulter sales representative.

or visit

<http://beckman.com/reagents/coulter-flow-cytometry/antibodies-and-kits/DURAClone-panels>



For Research Use Only - Not for use in diagnostic procedures

© 2020 Beckman Coulter, Inc. All rights reserved. Beckman Coulter, the stylized logo, and the Beckman Coulter product and service marks mentioned herein are trademarks or registered trademarks of Beckman Coulter, Inc. in the United States and other countries.

\* Alexa Fluor and Pacific Blue are registered trademarks of Molecular Probes, Inc.

For Beckman Coulter's worldwide office locations and phone numbers, please visit "Contact Us" at [beckman.com/home](http://beckman.com/home)

FLOW-7330SB06.20